

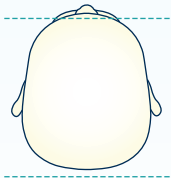
ARE YOU CONCERNED ABOUT THE SHAPE OF YOUR BABY'S HEAD?

Your baby may have a common and treatable condition known as Plagiocephaly. While not life-threatening, Plagiocephaly can affect the quality of your child's life. With over thirty years of extensive experience in the field, Cranial Center provides expert, non-invasive treatment to correct Plagiocephaly and allow your child's head to grow naturally.

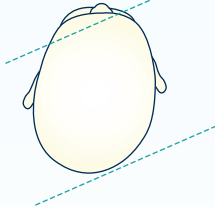
WHAT IS PLAGIOCEPHALY?

Plagiocephaly is a condition characterized by an asymmetrical distortion (flattening of one side) of the skull resulting in an abnormal head shape. If the baby's head is misshapen as a result of the birthing process, this trait may gradually correct itself. However if an abnormal head shape persists beyond six weeks of age, your infant should be evaluated by a professional.

Normal Infant Skull
(Top view)



Plagiocephaly:
Asymmetrical distortion
of the skull



WHAT CAUSES PLAGIOCEPHALY?

Plagiocephaly can occur before or after your baby's birth and can result from:

- **Conditions in the womb** - restrictions (small pelvis, etc.) or multiple babies
- **Prematurity** - cranial bones are softer and more easily deformed
- **Sleeping position** - (on back) and a limited amount of tummy time
- **Torticollis** - tightness of neck muscles
- **Overuse of carriers** - infant seats, swings and strollers



CRANIAL CENTER OFFICES

HAZLET

984 Highway 36
Hazlet, NJ 07730

MORRISTOWN

131 Madison Avenue
3rd Floor
Morristown, NJ 07960

HACKENSACK

385 Prospect Avenue
2nd Floor
Hackensack, NJ 07601

OUR HOURS

Monday - Friday: 8:30am - 4:30pm

CALL NOW TO SCHEDULE AN APPOINTMENT

1.800.685.9116

For more information visit

www.cranialcenter.com



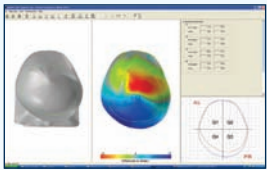
Shaping
THE FUTURE

EARLY INTERVENTION

Early orthotic intervention starting between three and eight months of age yields the best results. This strategic time period captures rapid cranial growth, and the orthosis directs the growth towards greater skull symmetry and proportion.

Cranial remolding orthoses are custom molded to encourage the skull to become more symmetrical and/or proportional. A cranial remolding orthosis does not squeeze the baby's head into shape, but rather redirects growth and provides the space into which the flattened portion of the skull can grow.

LEADING EDGE TECHNOLOGY



STARscanner™ & STARband®

STARscanner Laser Data Acquisition System

Cranial Center provides STARband™ cranial remolding orthoses to address deformational Plagiocephaly and post-operative cranial remolding orthoses for craniosynostosis.

The STARscanner® was the first laser photographic scanning system to receive clearance from the FDA, and remains the most widely used scanning system in the marketplace utilizing Class 1, eye safe lasers for the purpose of capturing 3D images of an infant's head.



“ The STARband® is the most widely used cranial remolding headband in the world. ”



THE ADVANTAGES OF OUR STARBAND® SYSTEM

The STARband™ and STARscanner® provide proven treatment outcomes while making the cranial remolding treatment process less stressful for infants and parents.

- ★ Non-invasive scanning replaces the traditional inefficient plaster casting process.
- ★ Scans are safe from all potential hazards and take less than two seconds to complete with simple photographic 3D imaging.
- ★ The STARscanner® is the most comprehensive data acquisition system with software specifically designed to safely document head shape measurement and symmetry changes from the beginning to the end of treatment.
- ★ Scan reports can be generated to measure the effectiveness of conservative physical therapy treatments and repositioning techniques prior to initiating helmet therapy.
- ★ Measures effectiveness of cranial remolding orthosis treatment by documenting outcomes for physicians and parents.
- ★ Provides insurance companies with specific measurements, information, and quantitative outcome analysis.

OUR STAFF

At Cranial Center you will find a team of caring and highly trained staff with unparalleled levels of expertise in treating infants with STARband™ cranial remolding orthoses. Our clinical members have treated thousands of children with head shape abnormalities stemming from Plagiocephaly, craniofacial disorders and post-op craniosynostosis (both open vault and new endoscopic procedures).

STUART WEINER, CPO



Our director Stuart Weiner, CPO, LPO has been a national pacesetter in the field of orthotics and prosthetics since 1977. With a degree from NYU and subsequent training at Howard Rusk Institute for Rehabilitation Medicine in

NYC, he has been an innovator at the cutting edge of this very unique field. A father of three, Stuart has been a practicing orthotist for over 30 years, creating cranial orthoses at the very forefront of this technology. Cranial Center introduced one of the first scanners in the world to the field of cranial remolding, keeping abreast of new techniques and experience in all styles of cranial helmet design. Mr. Weiner is one of a select few in the world able to design and provide specialized helmet treatment for post-operative minimally invasive endoscopic craniosynostosis surgery.

WHY CHOOSE CRANIAL CENTER?

- Experienced, caring & empathetic team who are passionate about providing the best treatment available.
- Our friendly staff will provide assistance with insurance dynamics.
- Our licensed orthotists will custom design a STARband for your infant to help ensure that **only 1 helmet** is needed throughout treatment.

For a consultation call us: 1.800.685.9116
Visit us online at: www.cranialcenter.com